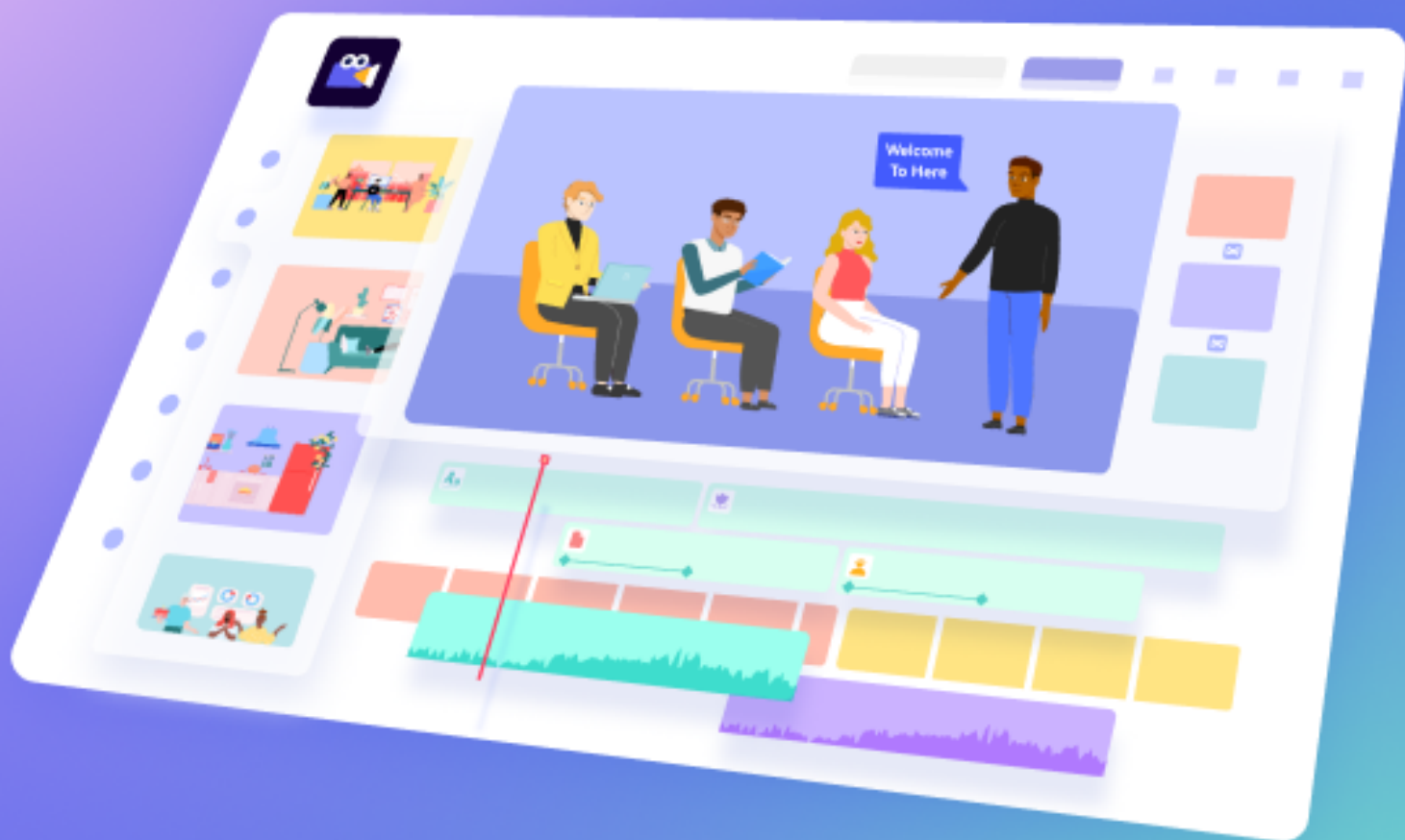




wondershare



Wondershare Anireel

User Guide for Windows

Content

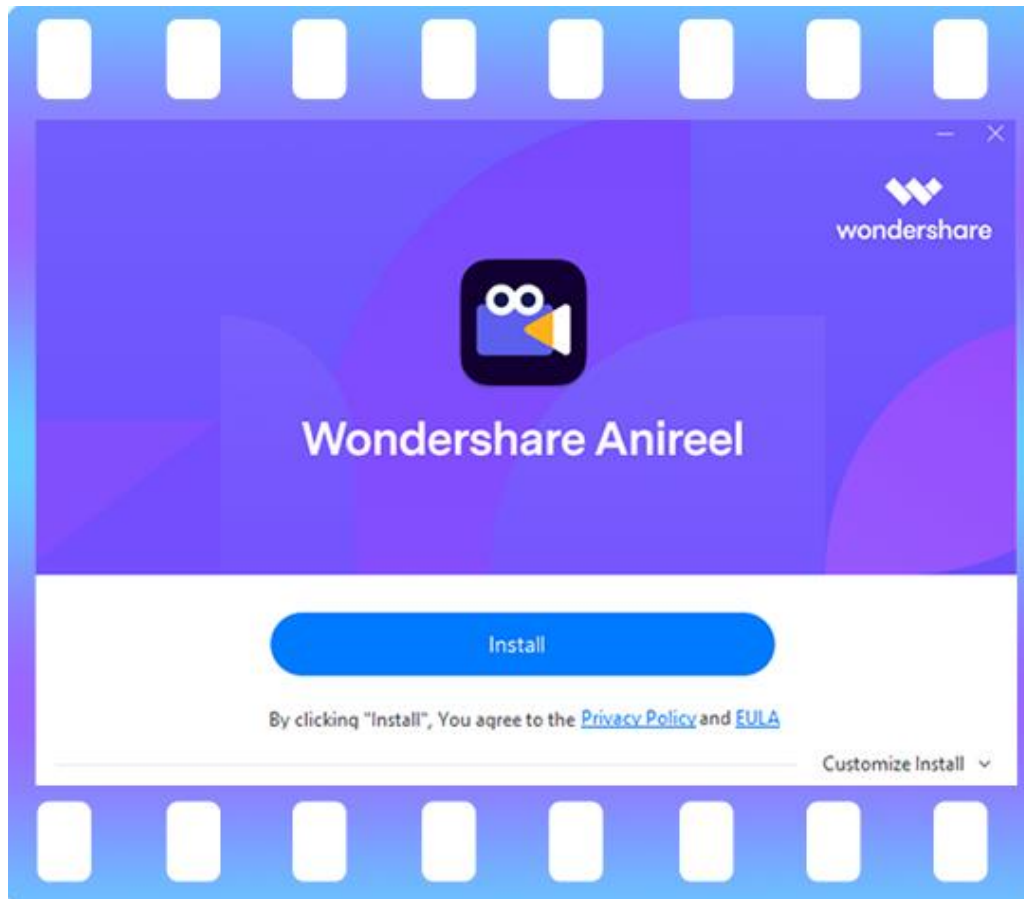
1. Get Started.....	1
1.1 A Quick Overview of Anireel	1
1.2 Download/Register/Buy/Uninstall	2
1.3 Keyboard Shortcuts	7
1.4 Navigating Anireel	8
2. Basic Editing	9
2.1 Assets Classification, Import, and Search	9
2.1.1 "Script-to-Animation" Tab	9
2.1.2 "Scenes" Tab	9
2.1.3 "Characters" Tab	10
2.1.4 "Props" Tab	11
2.1.5 "Text" Tab	11
2.1.6 "Audio" Tab	12
2.1.7 "Import" Tab.....	12
2.1.8 Search Box	13
2.2 Canvas	13
2.2.1 Canvas Layout.....	13
2.2.2 Canvas Properties	14
2.3 Visual Editing.....	15
2.3.1 Drag/Zoom/Rotate.....	15
2.3.2 Option Bar	16
2.4 Timeline Editing.....	19
2.4.1 Timeline Track	19
2.4.2 Timeline Function	19
2.5 Preview	23
3. Advanced Editing	24
3.1 Script to Animation	24
3.1.1 Entry	24
3.1.2 Script Generation.....	24
3.1.3 Script Editing.....	25

3.2 Lip Sync	26
3.2.1 Entry	26
3.3 Text to Speech.....	26
3.3.1 Entry	26
3.3.2 TTS Generation and Timeline Adding	27
3.3.3 TTS Editing	29
4. Save and Export	30

1. Get Started

1.1 A Quick Overview of Anireel

Welcome to the World [Wondershare Anireel](#) - a tool tailored for content creators who create animated videos to lower the creation threshold and achieve efficient creation.



Wondershare Anireel is also widely used in the popularization of knowledge, storytelling, crosstalk, tutorials, marketing, and any other creative videos.

You can build a complete video by adding and editing scenes, characters, props, text, audio, and other materials in the Anireel resource library. And you can also upload videos, audio, and pictures by yourself. Animation videos created by Anireel can be exported to MP4 formats with multiple qualities/resolutions.

This guide contains key resources for you to learn:

- Add materials and import audio, video, and pictures in various formats.
- Edit the material on the canvas and timeline.
- Use "Script to Animation" to generate customizable videos in one click
- Use "Text-to-Speech" to convert text to audio
- Preview and export your video
- Purchase a membership to remove the video watermark

1.2 Download/Register/Buy/Uninstall

Please follow the instructions to complete the download, installation, registration, purchase, login, update, or uninstall.


1.2.1 Download

Click to get a quick download channel:

Free Download 

1.2.2 Install



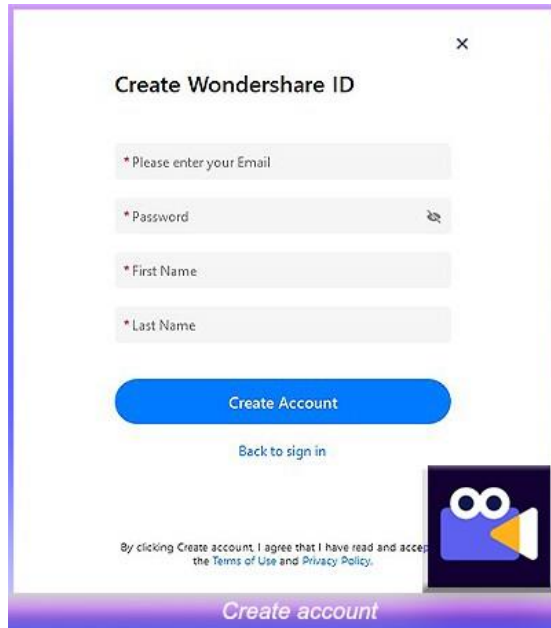
Double-click the ".exe" file  to start the installation, and follow the instructions to complete the installation process.

1.2.3 Registration

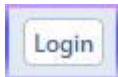
There are two methods to register:

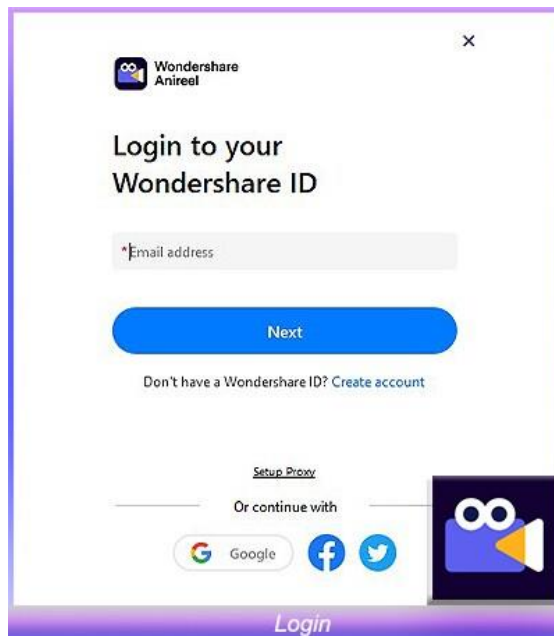
① Method One

Enter the Wondershare account center, then click "Create account". Fill in your email and set a password to create an account.



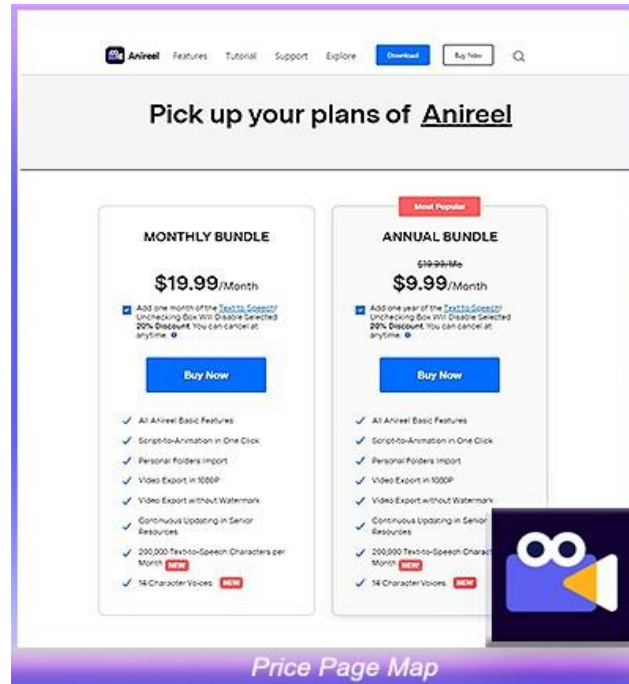
2 Method Two

Launch Wondershare Anireel, click "Login"  button in the top right corner, then click "create account".

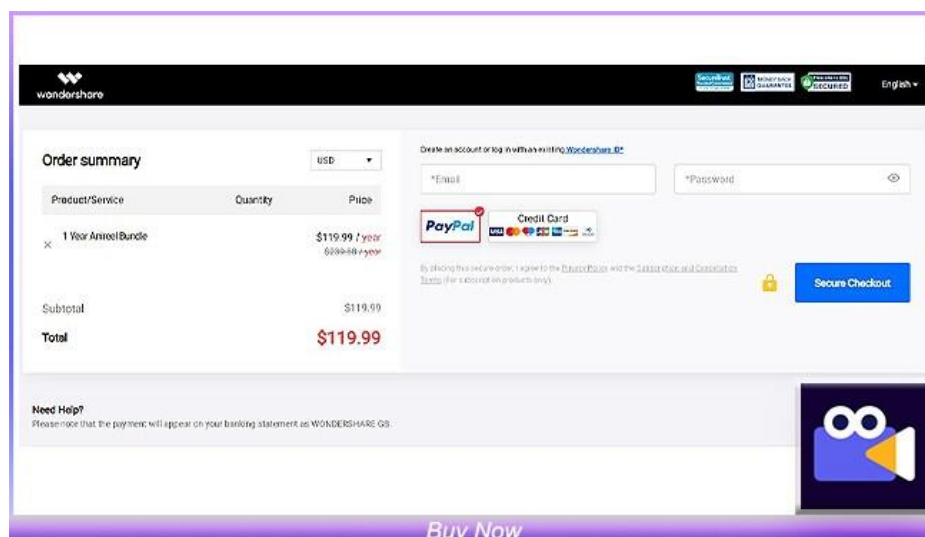


1.2.4 Purchase

Entering the purchase page through "[Buy Now](#)", all monthly, annual, and TTS plans are optional, pick your preference :)

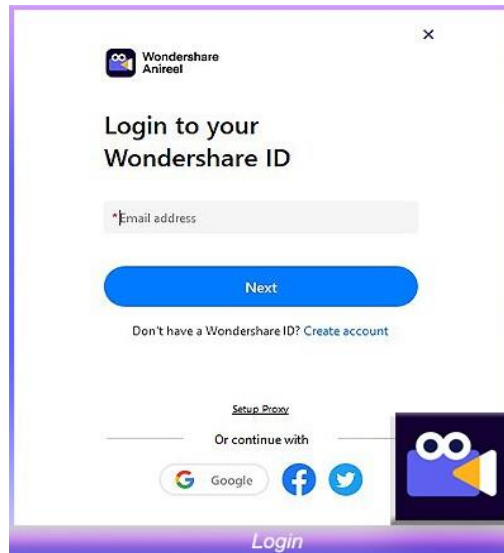


Click "Buy Now" or use PayPal directly. Fill in your Wondershare ID, and then select the payment method.



1.2.5 Login

Open Wondershare Anireel, click the "Login" button icon in the upper right corner, enter your email and password to log in to your Wondershare ID.

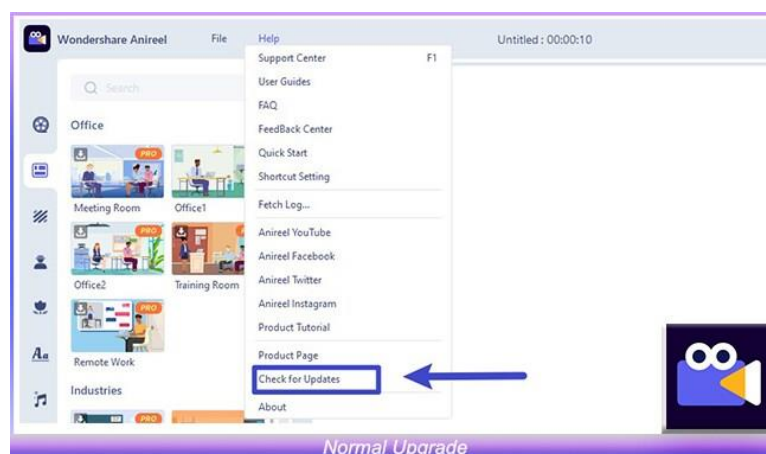


1.2.6 Upgrade

There are two ways to keep Wondershare Anireel up to date: Normal Upgrade and Forced Upgrade.

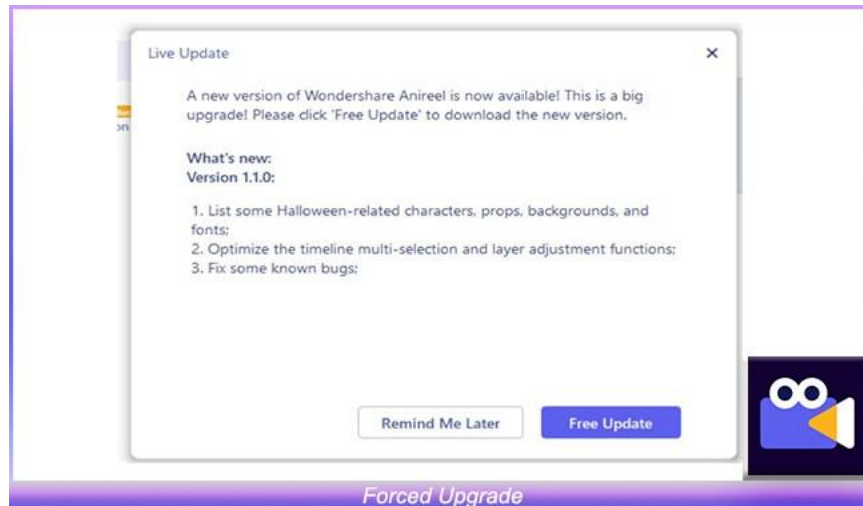
1 Normal Upgrade

When the program starts, an upgrade reminder will pop up when there is a higher version. You could also manually check the upgrade through Help-Check for updates.



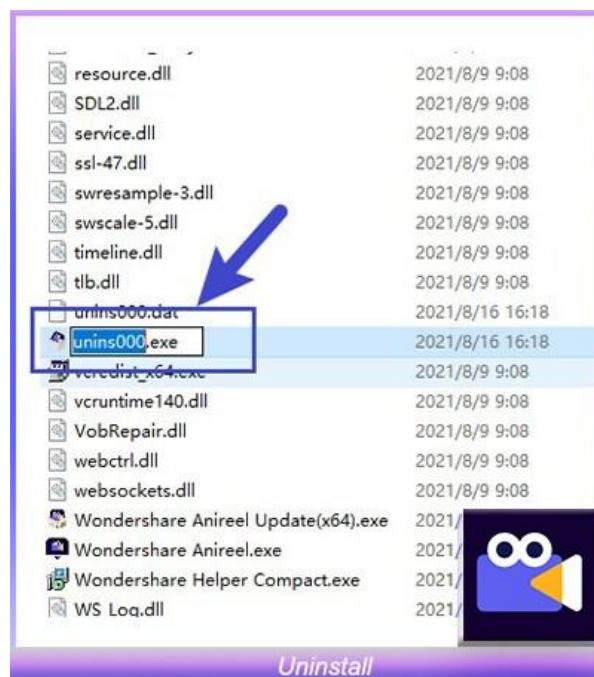
2 Forced Upgrade

When the forced upgrade is started, an upgrade reminder will automatically pop up if there is a higher version. It cannot be used without the upgrade.



1.2.7 Uninstall

To remove Anireel from your system, right-click on Anireel's icon and select the "Open File Location" option, click the "**unins000.exe**", you can uninstall it then. A prompt will pop up After you have uninstalled it. You are most welcome to give your feedback if you had any suggestions for us.



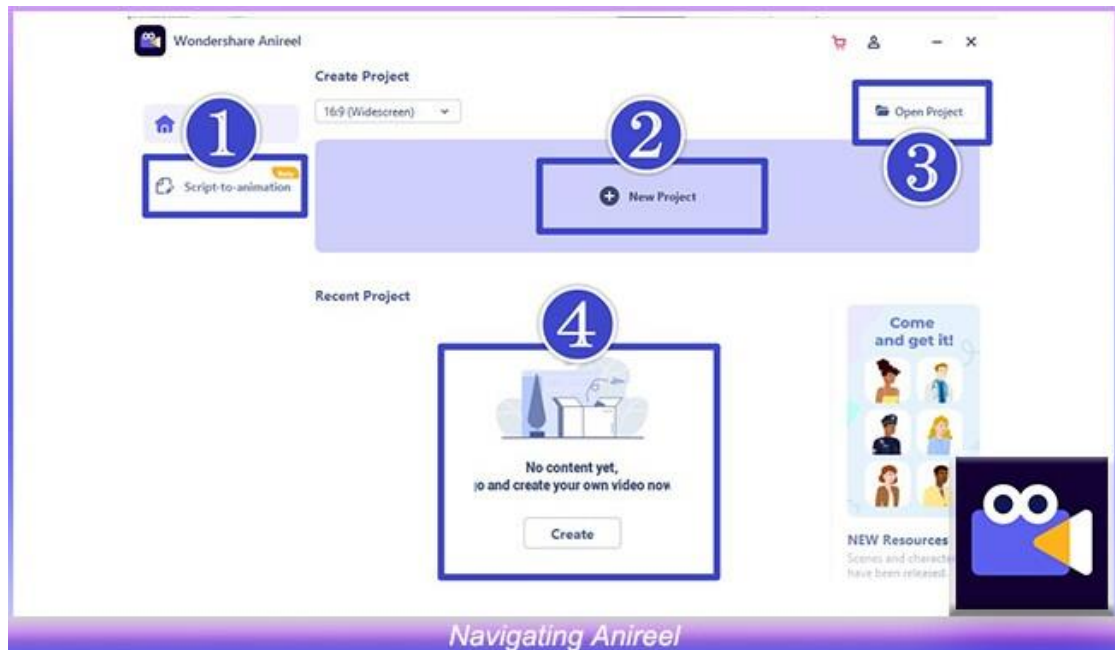
1.3 Keyboard Shortcuts

Use keyboard shortcuts to improve your video editing effectiveness. All shortcuts are only valid when editing.

Keyboard Shortcuts	
Exit	Alt+F4
Copy	Ctrl+C
Preference	Ctrl+Shift+,
New Project	Ctrl+N
Open Project	Ctrl+O
Save Project	Ctrl+S
Save Project As	Ctrl+Shift+S
Archive Project	Ctrl+Shift+A
Support Center	F1
Zoom to Fit Timeline	Shift+Z
Paste	Ctrl+V
Undo	Ctrl+Z
Redo	Ctrl+Y
Delete	Delete
Cut	Ctrl+X
Play/Pause	Space
Move up	↑
Move Down	↓
Move Left	←
Move Right	→

1.4 Navigating Anireel

Double click the Anireel shortcut on your computer to open Anireel. That will open the "Get-Started" window, where there are 4 ways for you to proceed: "[Script-to-Animation](#)", "[Create Project](#)", "[Open Project](#)", and "[Recent Project](#)".



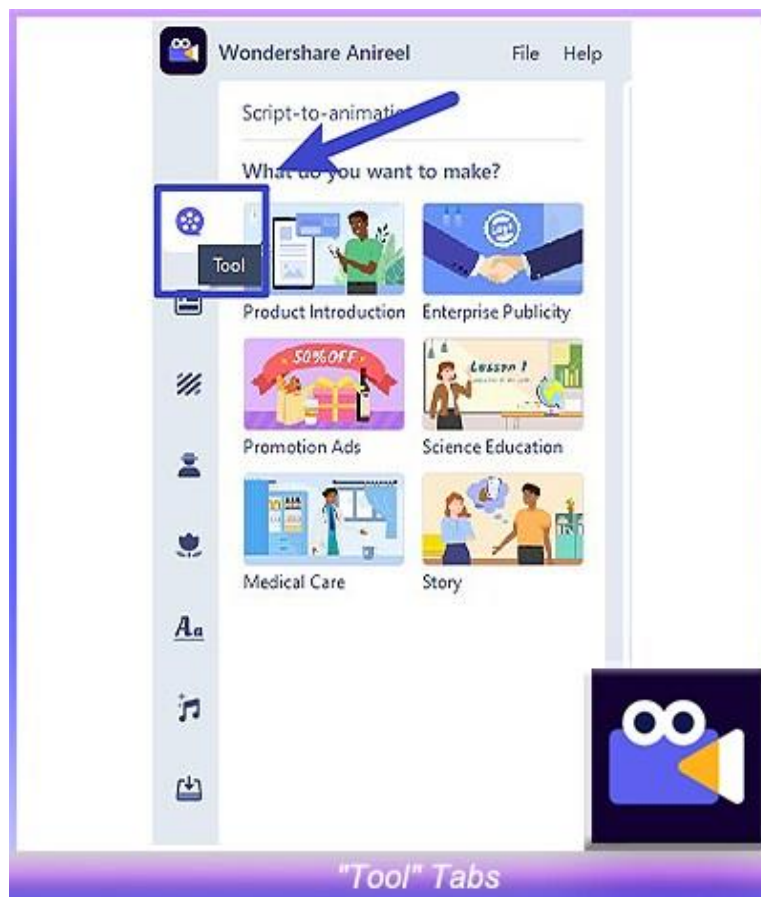
2. Basic Editing

2.1 Assets Classification, Import, and Search

2.1.1 "Script-to-Animation" Tab

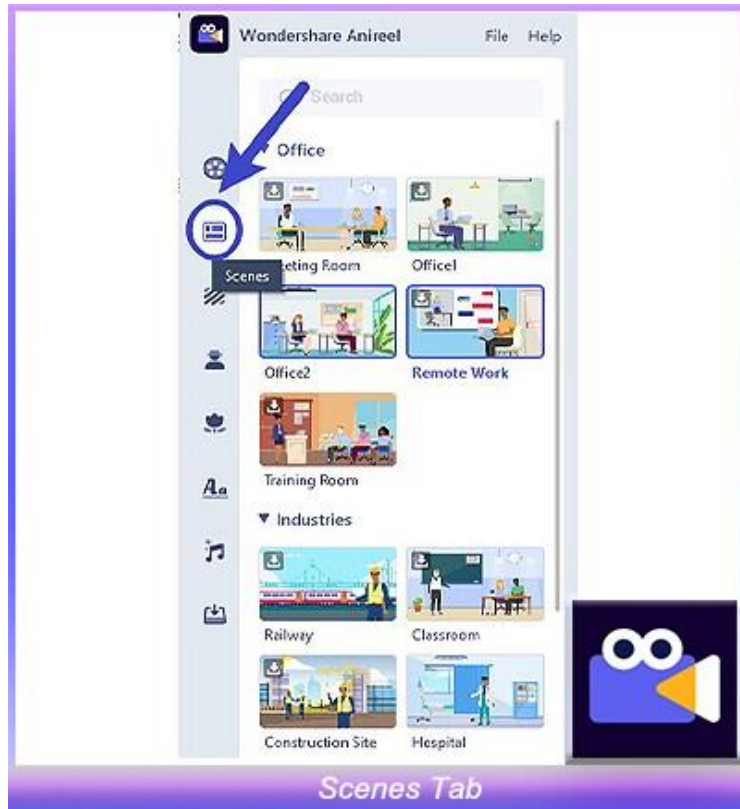
The assets in the main interface are divided into eight tabs: "Script-to-Animation", "Scenes", "Background", "Characters", "Props", "Text", "Audio", and "Import".

In the "Script-to-Animation" tab, you can generate or edit the script into animation again.



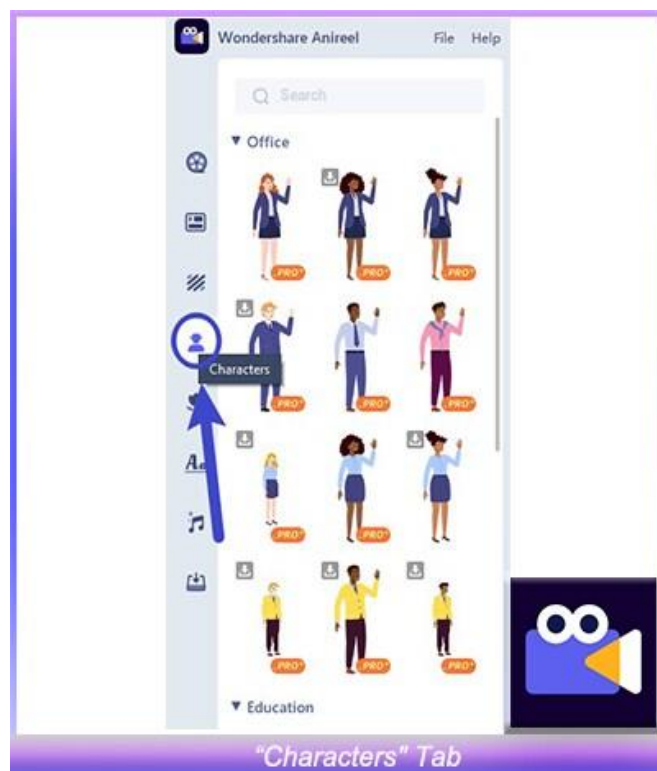
2.1.2 "Scenes" Tab

In the "Scenes" tab, you can add different types of scenes to the video.



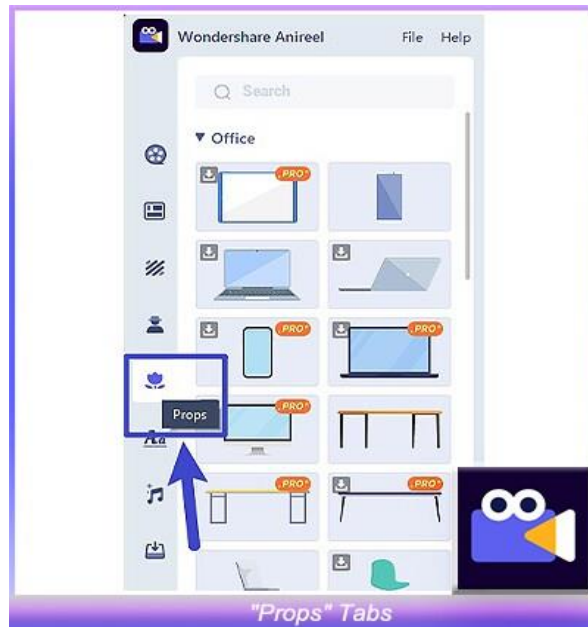
2.1.3 "Characters" Tab

In the "Characters" tab, you can add different types of characters to the video.



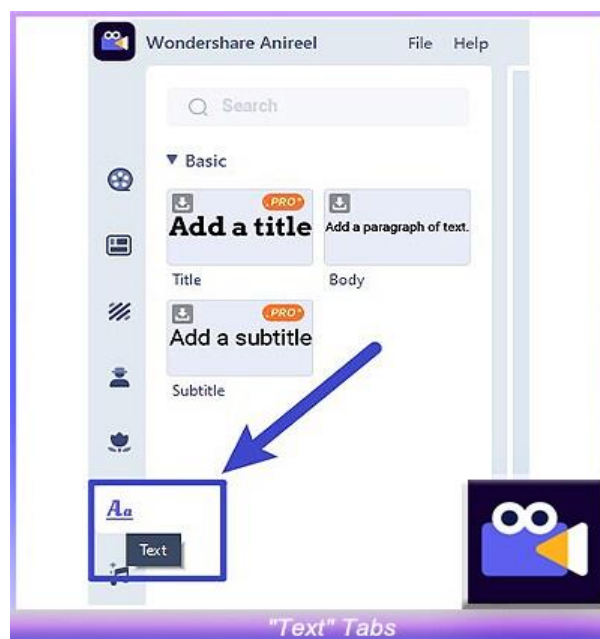
2.1.4 "Props" Tab

In the "Props" tab, you can add different types of props to the video.



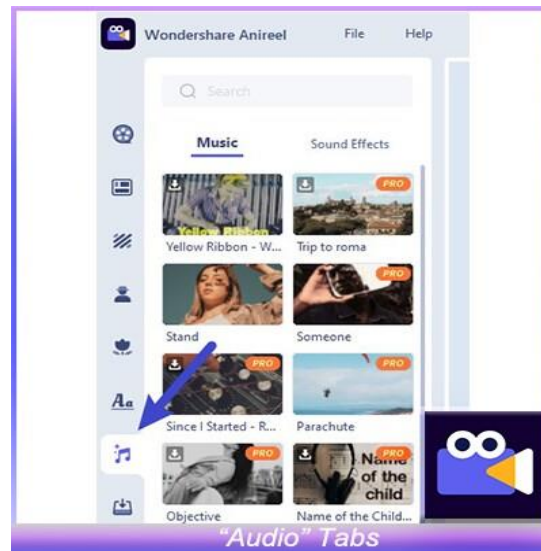
2.1.5 "Text" Tab

In the "Text" tab, you can add different types of text to the video.



2.1.6 "Audio" Tab

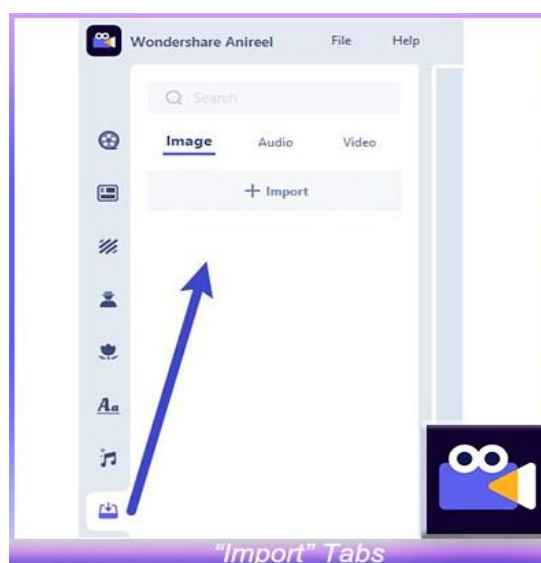
In the "Audio" tab, you can add different types of Music and Sound effects to the video, or click "Text to Speech" to input text, and convert it to audio to add to the video.



2.1.7 "Import" Tab

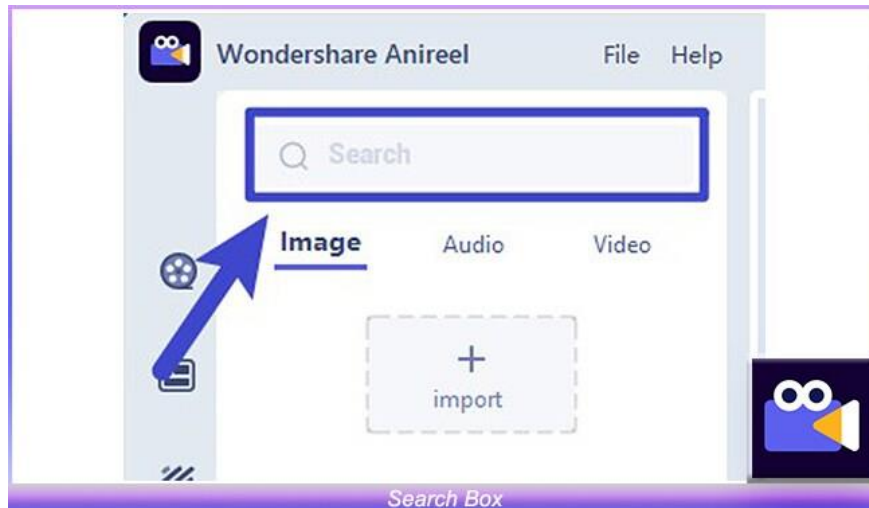
In the "Import" tab, you can upload your pictures, audios, and videos by clicking the import button of Image/Audio/Video.

Asset import has restrictions on file types. Anireel supports the same types of pictures, audio, and videos supported by Filmora X.



2.1.8 Search Box

All assets support keyword matching search. You can click the search box and enter the keyword of the asset you want to obtain.



2.2 Canvas

2.2.1 Canvas Layout

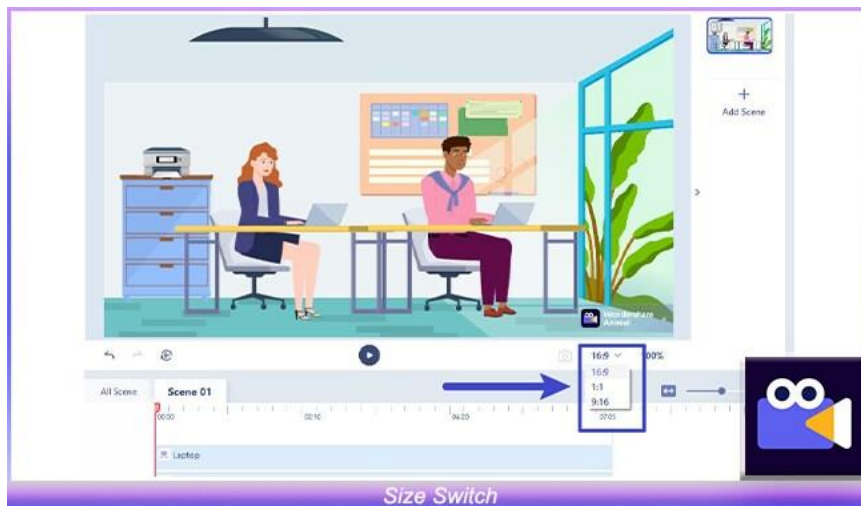
The canvas contains the editing area, the function options below and the storyboard on the right.



2.2.2 Canvas Properties

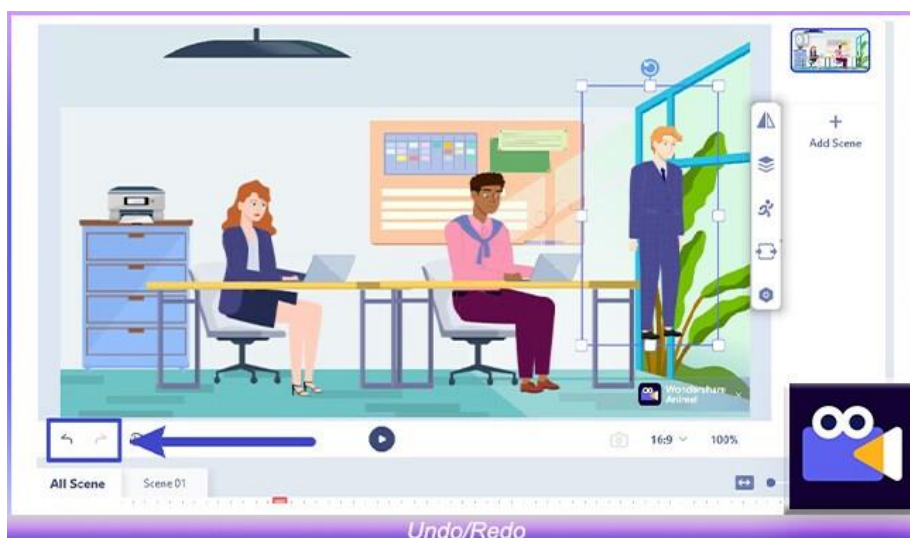
1 Size Switch

- The default size is 16:9. Click on the bottom right of the canvas, you can switch the size to 9:16 or 1:1.



2 Undo/Redo

- Click the "Undo" and "Redo" buttons at the bottom left of the canvas to undo the previous operation or restore the undone operation. There is no limit to the number of steps returned by "Undo".

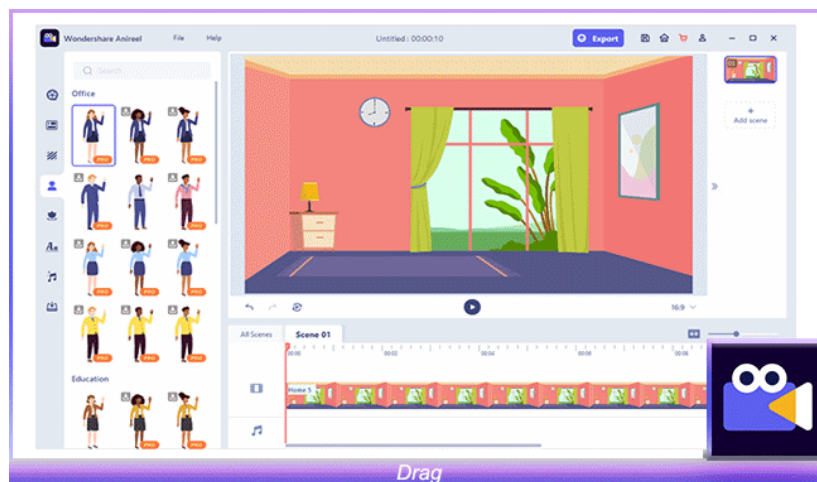


2.3 Visual Editing

2.3.1 Drag/Zoom/Rotate

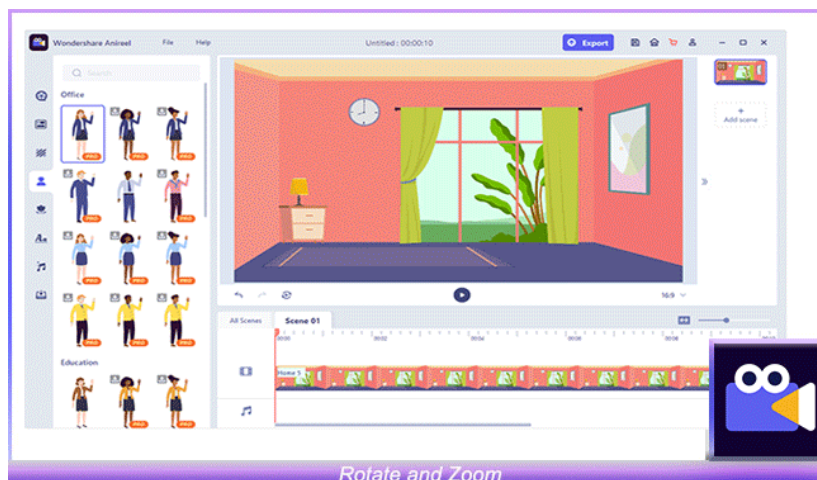
1 Drag

- You can drag non-audio materials from the resource area to the canvas.



2 Zoom/Rotate

- Click on the material on the canvas and select eight points on the frame to achieve zooming.
- Select points on corners of the border, the material can be scaled proportionally.
- Select points on the border, the material can be scaled non-proportionally. Select rotation points on the border, the material can be rotated.



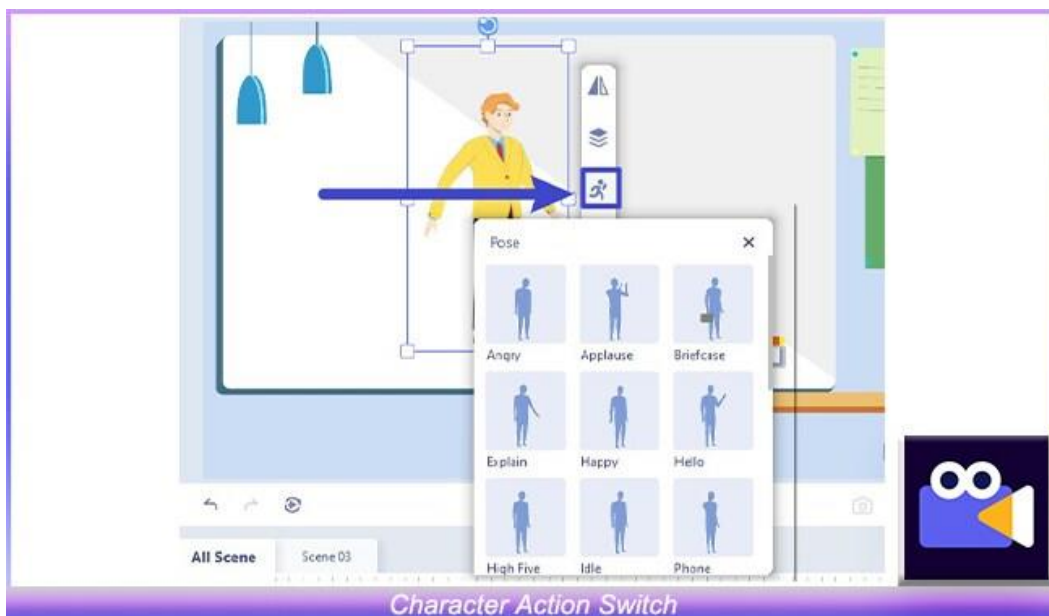
2.3.2 Option Bar

You can click on the material on the canvas and use the property bar on the right to perform the following operations on the material:

Horizontal/Vertical Flip



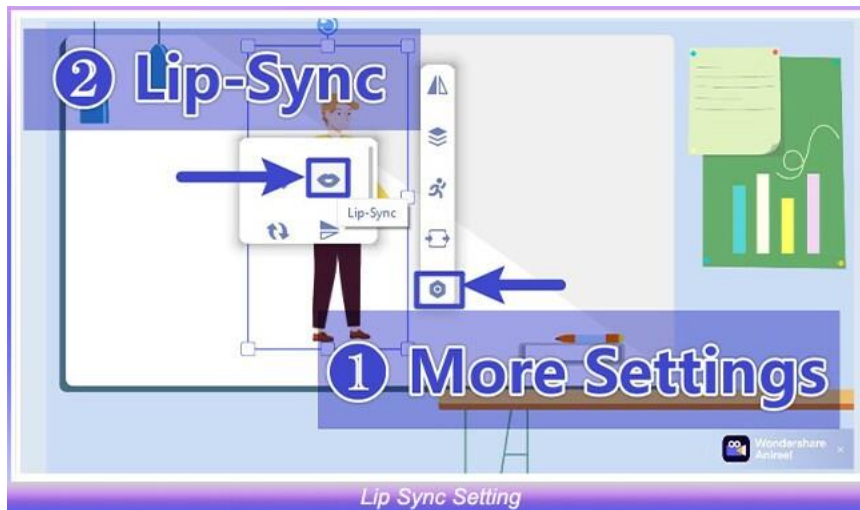
Character Action Switch



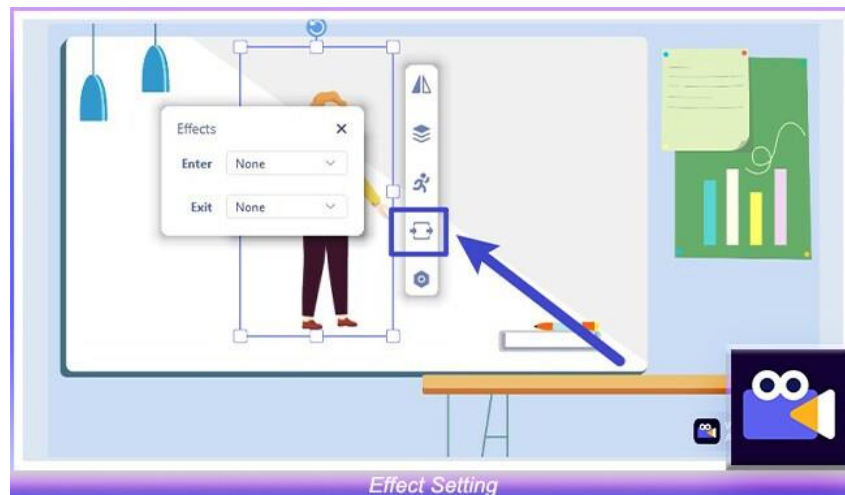
Change the Color of Props



Lip Sync Setting



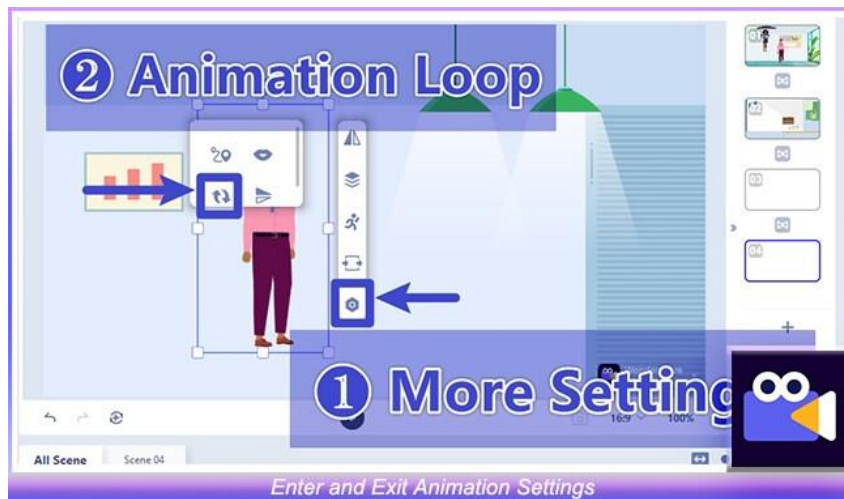
Effect Setting



Motion Path Setting



Enter and Exit Animation Settings

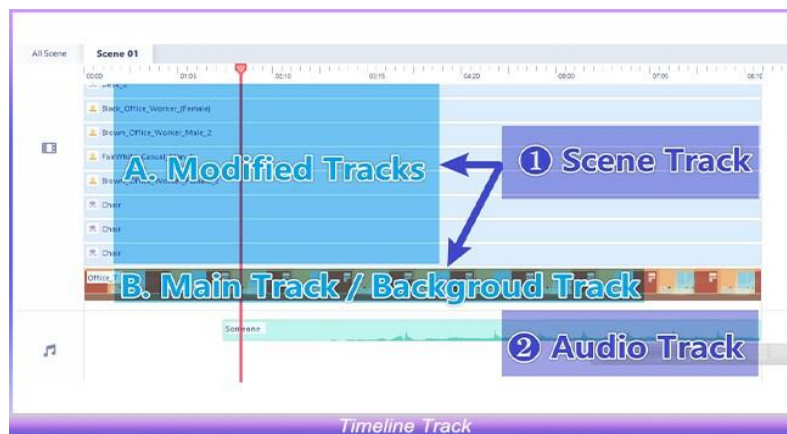


2.4 Timeline Editing

2.4.1 Timeline Track

There are two types of tracks: [Scene Track](#) and [Audio Track](#).

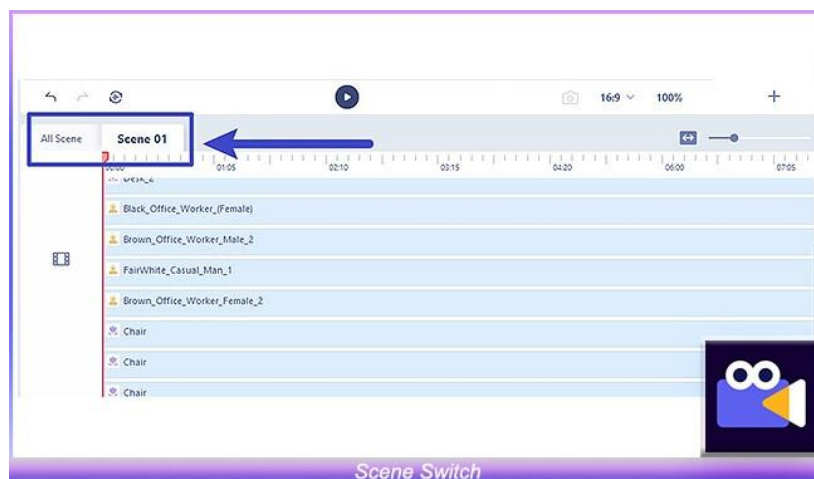
The scene track contains the [Main Track](#) and [Modified Tracks](#). There is only one main track, also called the background track, which is located at the bottom of the scene track. Multiple modified tracks can be added.



2.4.2 Timeline Function

1 Single Scene/ All Scene Switch

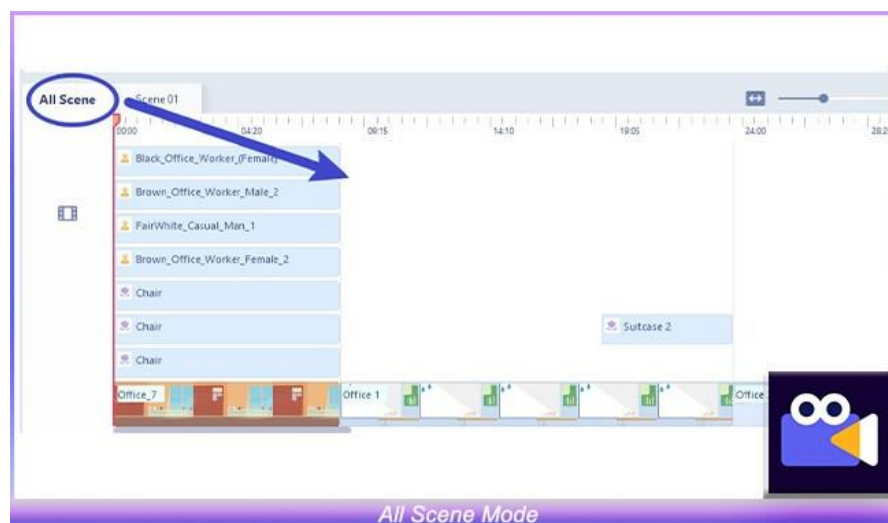
You can switch between the single scene timeline and the global timeline through the "All Scene/Scene 01/02/03..." switch in the upper left corner of the timeline.



If you turn on the single scene timeline mode, the timeline area will only edit the materials in the current scene, helping you eliminate interference and focus on the storyboard of a single scene.



If you turn on the global timeline mode, the timeline area will display the entire project, which is convenient for overall editing and global control of the video.



2 Zoom

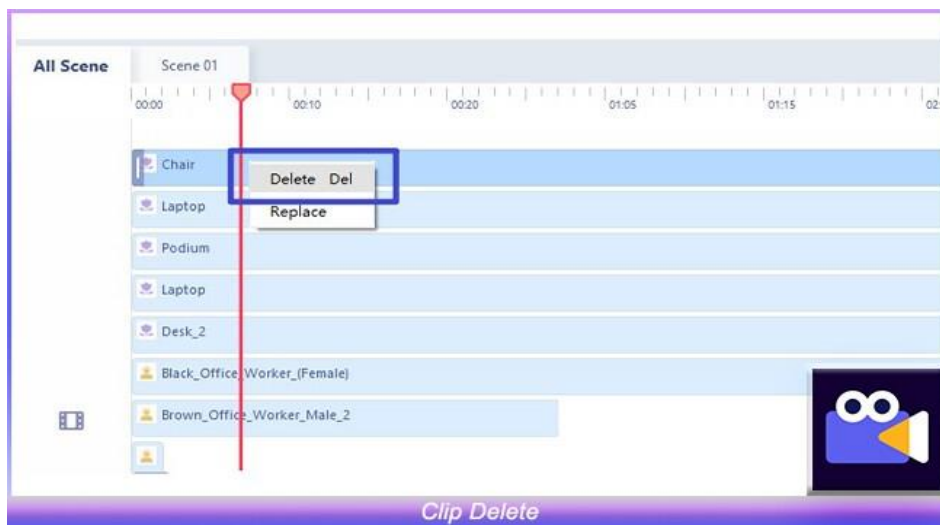
In global scene mode, you can zoom to adjust the minimum one screen to 1s.

In single scene mode, you can zoom to adjust the minimum one screen to 1s.

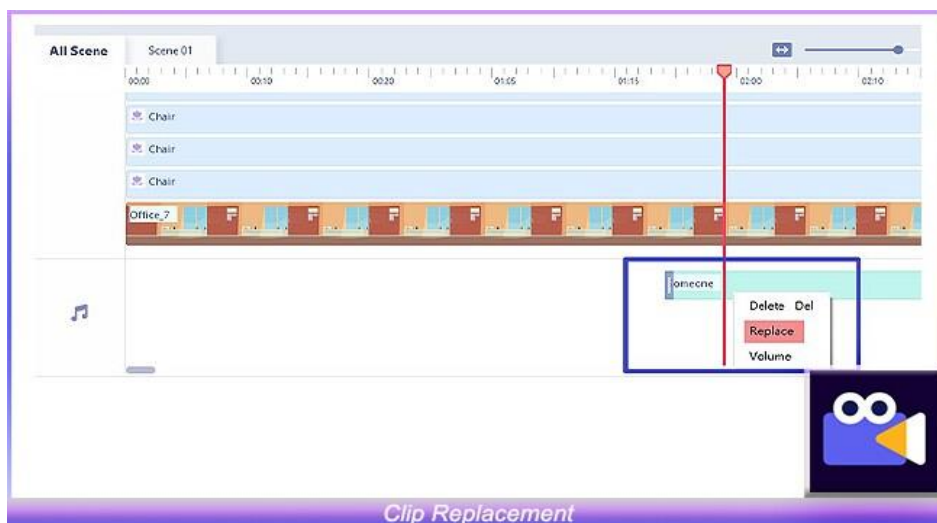
3 Timeline Clip Editing

The following basic operations can be performed on the timeline:

- **Clip Adding:** Drag the audio in the resource area to the timeline audio track.
- **Clip Movement:** Select the clip, press and hold the left mouse button to move, release to place.
- **Clip Delete:** You can click "Delete" in the right-click menu or directly use keyboard shortcuts.



- **Clip Replacement:** Right-click clip and select "Replace" to replace the same type of material. The duration before and after the replacement is equal.



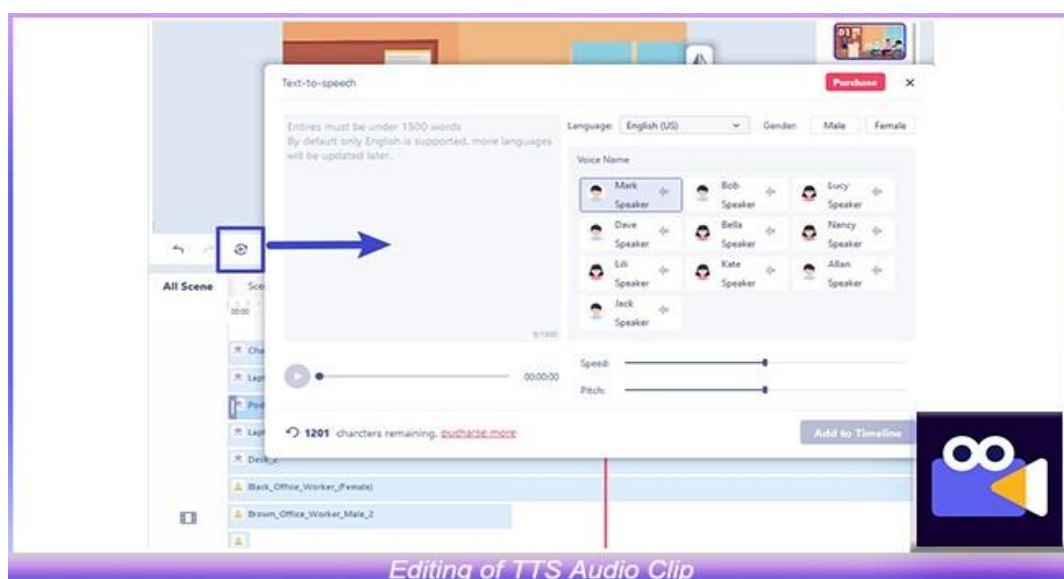
A. In single scene timeline mode

- The front and rear ends of all modified tracks except for cross-scene clips must not exceed the main track.
- When the rear end of the main track is shortened, the modified track clips that overlap at the end will be shortened with the main track until the modified track clip is deleted.
- The modified track will not be affected when the main track is elongated.
- When the front end of the modified track is elongated, it can reach the entrance of the main track as far as the main track.
- When the rear end is elongated, if the length of the main track exceeds the length of the main track, the main track grows with the modified track clip, and the ends are aligned.



B. In all scene timeline mode

- When the main track is shortened, the modified track decreases with the scene until it disappears.
- When the modified track clip is shortened/extended, the pullable range is the blank range before and after the clip on the track (the cross-scene clip is not affected by the main track).
- The modified track clip cannot extend beyond the back end of the main track.
- The last main track clip will follow the elongation or backward movement of the modified track that overlaps at the end to align with its elongation.

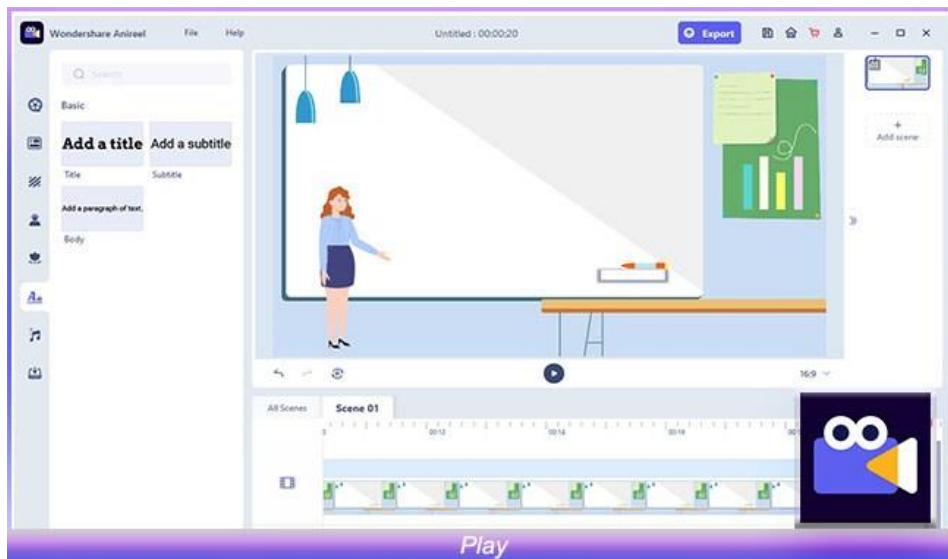
Editing of TTS Audio Clip: Right-click the TTS audio clip and click "Text-To-Speech" to jump to the TTS window for editing.



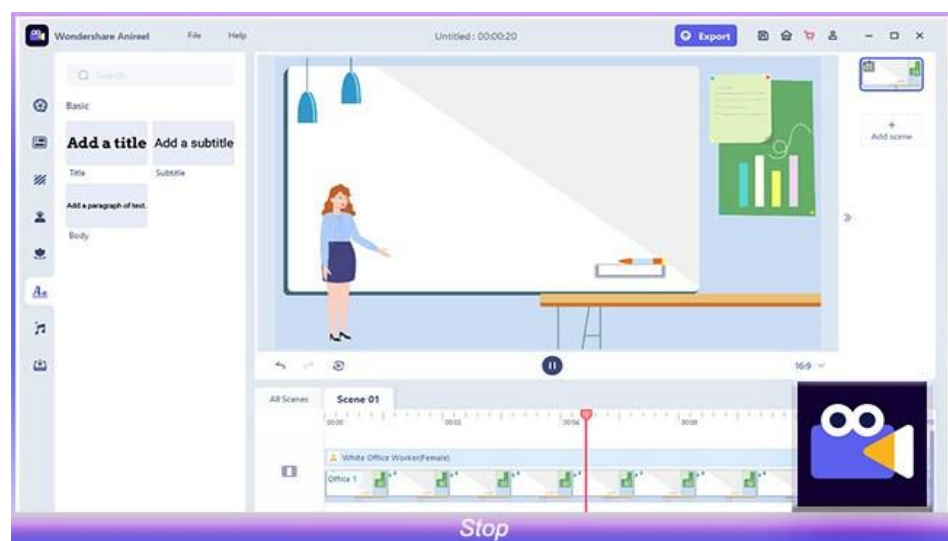
2.5 Preview

Click the preview button  below the canvas to preview the video and click  to stop the video preview.

1 Play



2 Stop

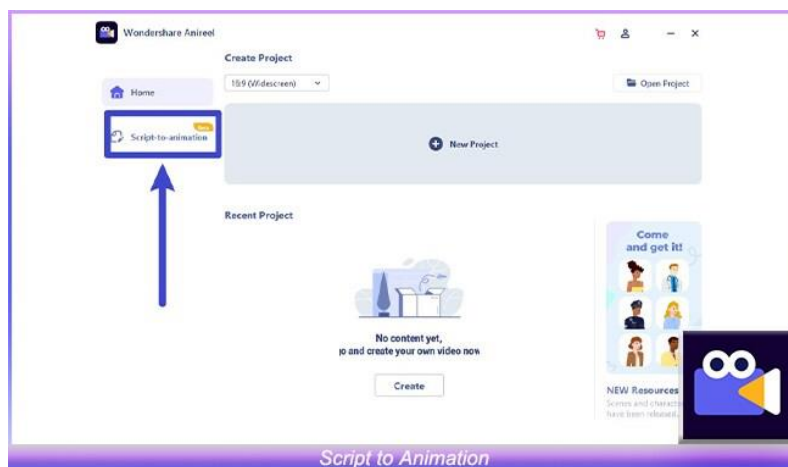


3. Advanced Editing

3.1 Script to Animation

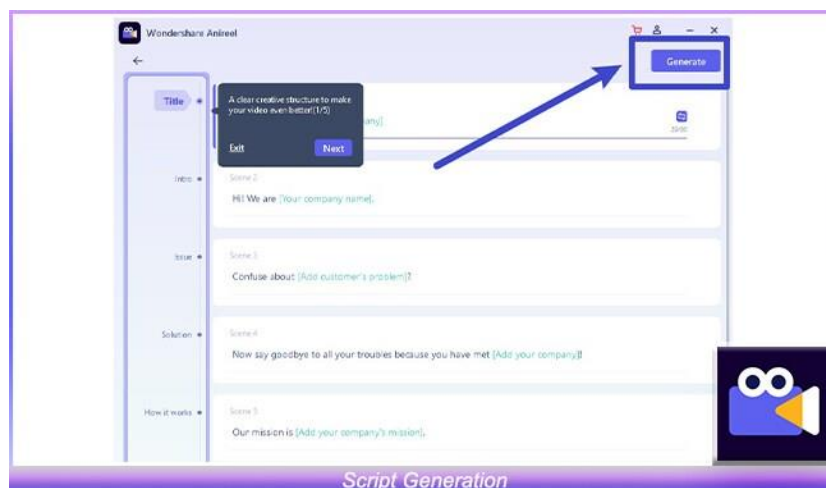
3.1.1 Entry

Click "Script to animation" on the start page to generate an animated video in one click.



3.1.2 Script Generation

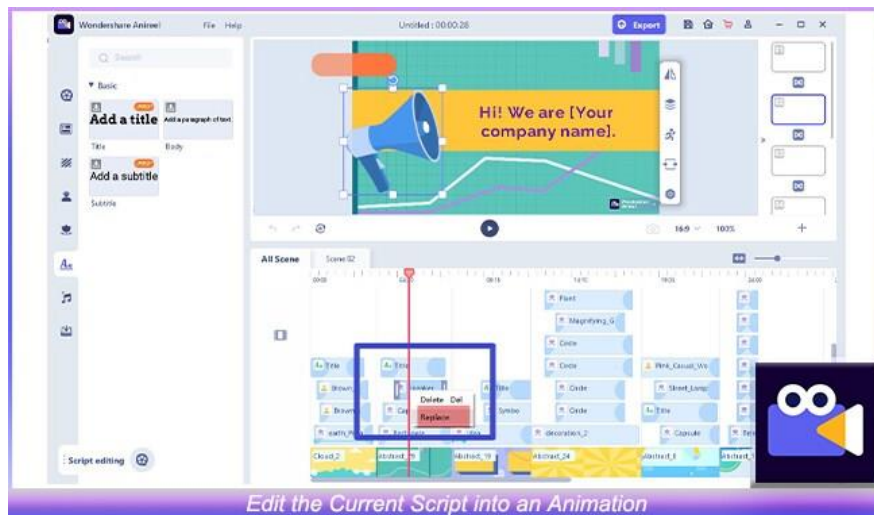
Enter the script interface, select the video tag you prefer to generate, enter the video title and video script, click "Generate" in the lower right corner to generate a fancy animation.



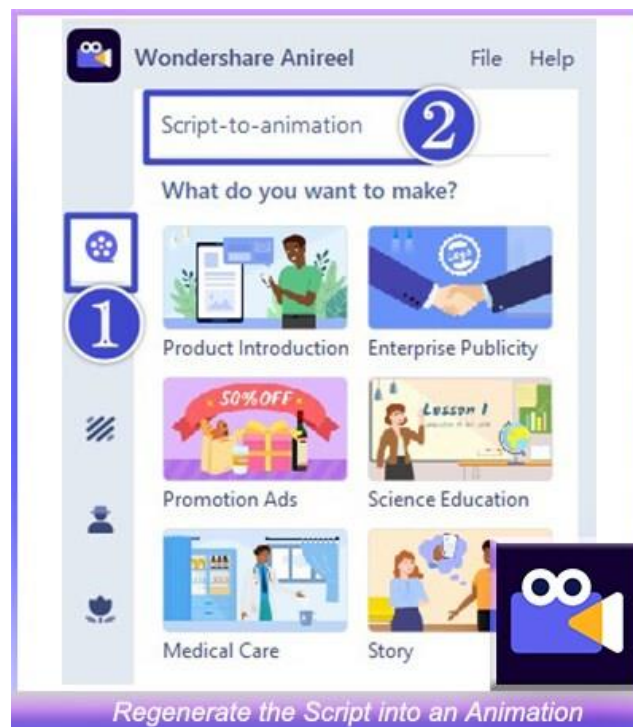
3.1.3 Script Editing

Scripts can be re-edited in the following ways after the script is generated.

- 1 Edit the current script into an animation: right-click the clip on the timeline to replace resource styles and edit TTS, etc.



- 2 Regenerate the script into an animation: Click "Tool" at the top of the resource area tab to regenerate and overwrite the current script into an animation.



3.2 Lip Sync

3.2.1 Entry

Click on the character material on the canvas and click on the "Lip Sync" in the property bar to pop up the export sync edit box.

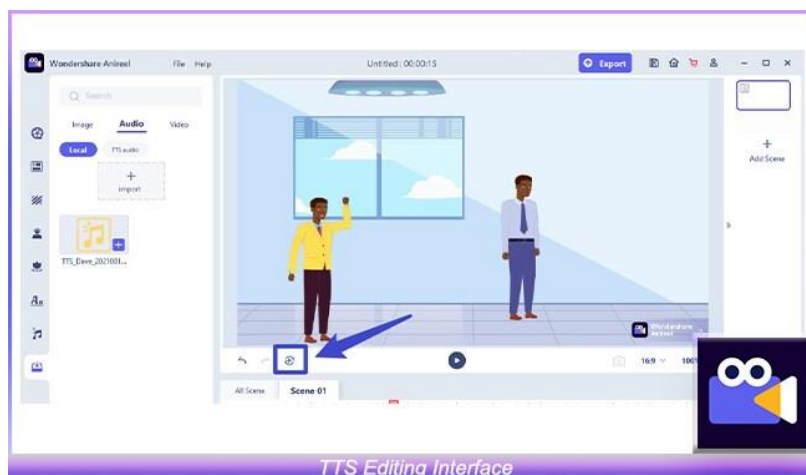


3.3 Text to Speech

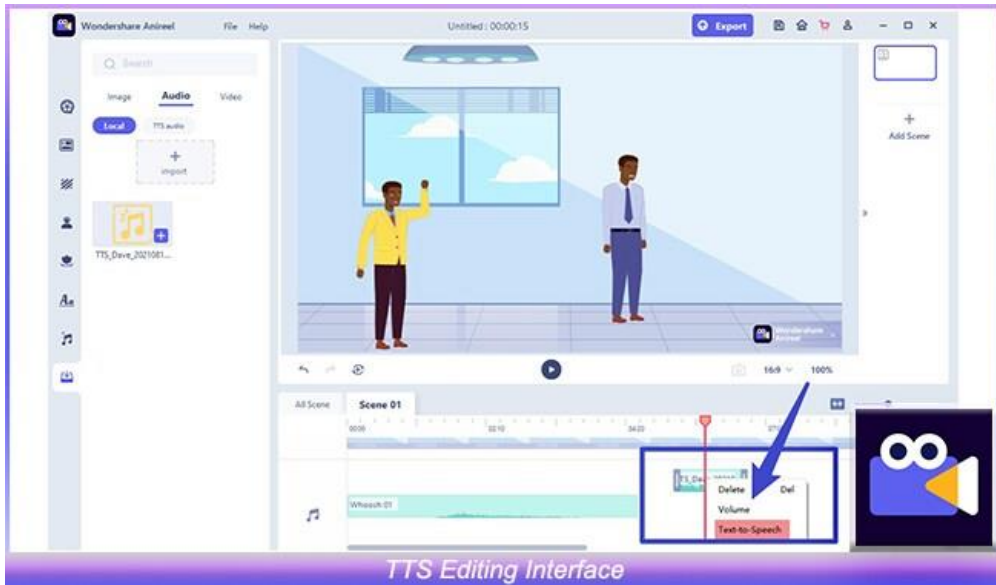
3.3.1 Entry

You can enter the TTS editing interface in the following ways:

- 1 Toolbar → TTS

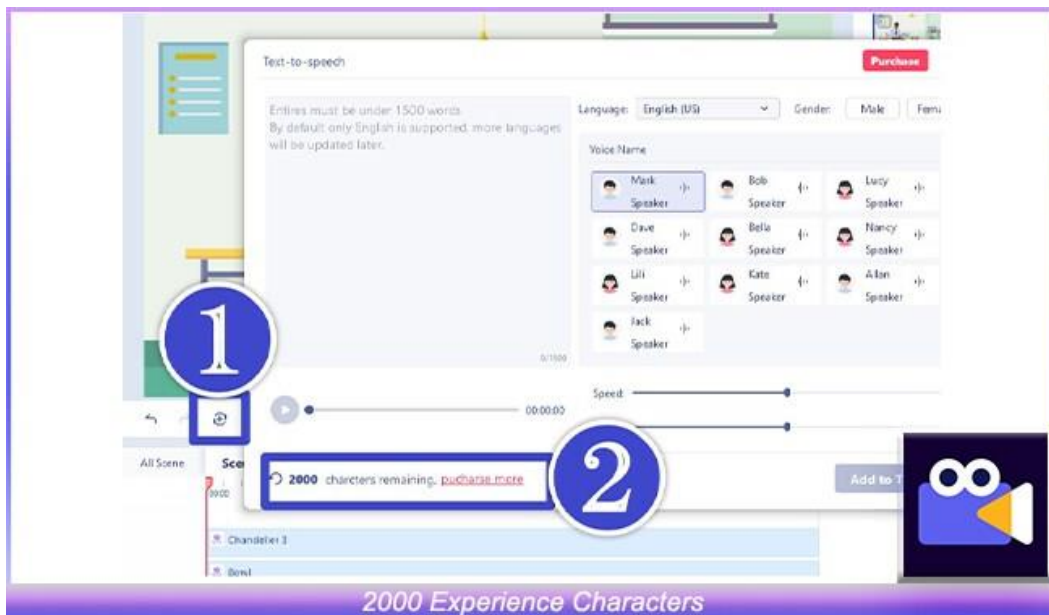


2 Timeline → Audio → Generate TTS Audio → Add to Timeline → Right Click TTS Audio → Text-to-Speech

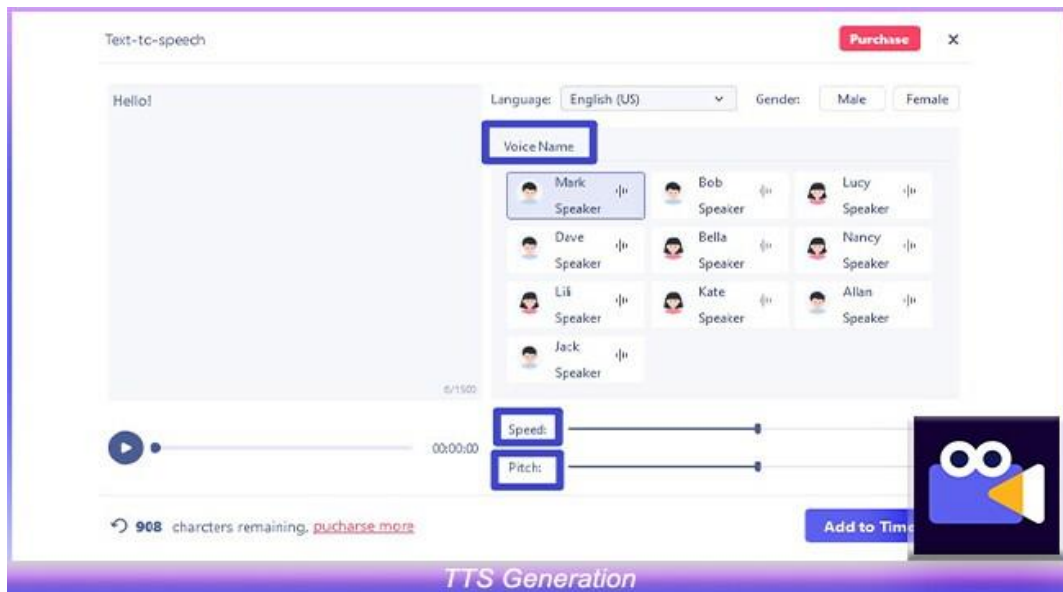


3.3.2 TTS Generation and Timeline Adding

You will receive 2000 experience characters for free at your first use experience to TTS.



In the TTS editing interface, you can choose your favorite vocals for audition. Enter the text you want to convert into audio, and set the appropriate volume, speed, and pitch.



Click Generate, your TTS audio will be stored in "Import → Audio" in the resource area. Click "Add to Timeline" and the generated TTS will be placed on the timeline track.



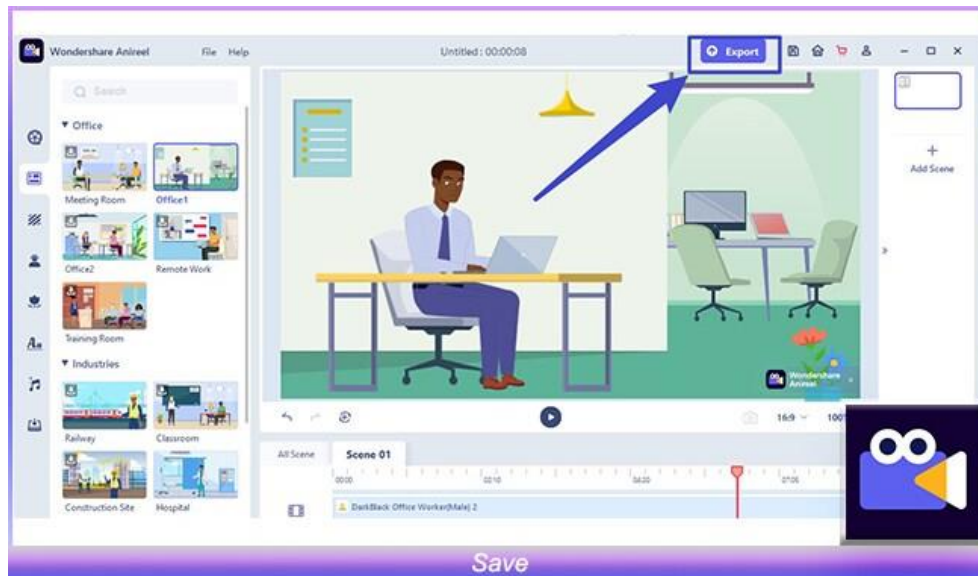
3.3.3 TTS Editing

If you want to edit the generated TTS, right-click the TTS audio clip on the timeline and click "Text-to-Speech".

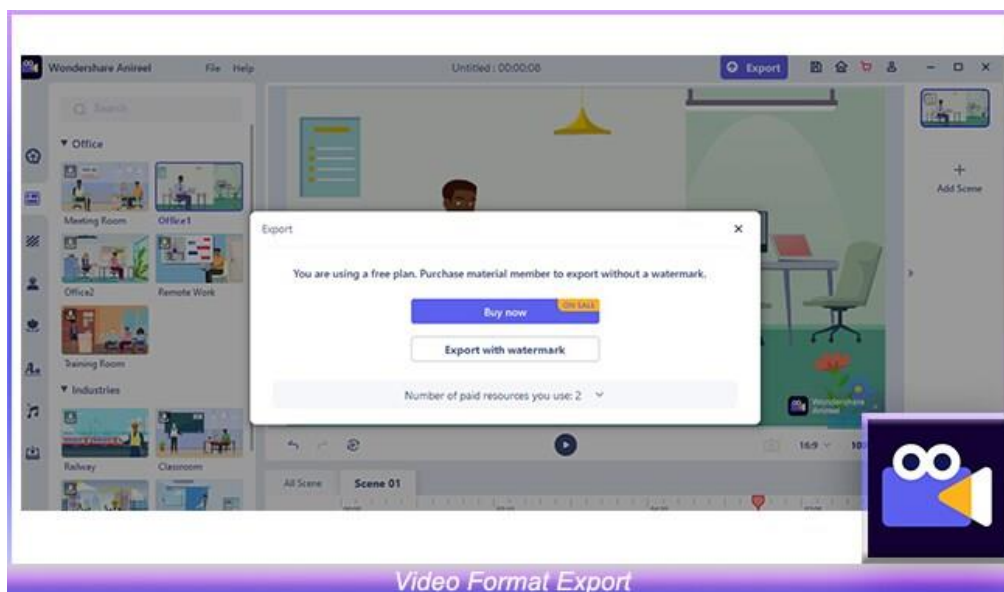


4. Save and Export

- Click the "Save" button in the upper right corner to save the changes during the editing process.



- After all the video changes are completed, click the "Export" button in the upper right corner to download the video.
- You can set the video name, save path and quality/resolution on the export settings page.
- Anireel currently only supports MP4 video format export.



- Free users' videos will be exported with watermarks, and the watermarks can be removed by upgrading members.